

16th Sunday after Pentecost  
September 4, 2016 10:45 am

## THE GATHERING

*Please greet those around you and welcome our guests before the service begins.*

### Gathering

**Our God is an awesome God; he reigns from above with wisdom, pow'r, and love. Our God is an awesome God!**

Welcome and Greeting Renee Hoke  
The peace of the Lord be with you.  
**And also with you.**

Prelude Debbie Watson

\*Call to Worship Renee Hoke  
We've come to worship God,  
**who loved us before we were yet born,**  
who knows us even better than we know ourselves,  
**whose presence never leaves us,**  
and whose love for us never ceases.  
**This is our God.**  
**Let's worship together!**

\*Hymn of Praise No. 25  
*Praise to the Lord, the Almighty*

\*Invocation Renee Hoke

\*Gloria Patri No. 136  
**Glory be to the Father, and to the Son, and to the Holy Ghost;**  
**As it was in the beginning, is now, and ever shall be,**  
**World without end. Amen. Amen.**

## THE WORD

Reading of the Scripture Hailey Wineinger,  
Madi Showalter & Ann Hunter  
Psalm 139:1-18, 23-24  
Pew Bible Page 577

### Sung Response

**I was there to hear your borning cry, I'll be there when you are old. I rejoiced the day you were baptized to see your life unfold.**

Children's Message Justin Dickey

Pastoral Prayer & Lord's Prayer Renee Hoke

**Our Father, who art in heaven, hallowed be thy name. Thy kingdom come, thy will be done on earth as it is in heaven. Give us this day our daily bread, and forgive us our sins as we forgive those who sin against us. And lead us not**

**into temptation, but deliver us from evil. For thine is the kingdom, and the power, and the glory forever. Amen.**

Response to Prayer *Threefold Amen* Chancel Choir

Ministry of Music Chancel Choir  
*Psalm 139* Pote

Sermon Renee Hoke

## THE SACRAMENT

### THE LORD'S SUPPER

Hymn *All Who Hunger, Gather Gladly* No. 419  
Communion Invitation Gary Ballard  
Elders' Prayers Susan Buckley & Cathy Gately  
Sharing the Bread and Cup  
*All believers are invited to share in the Lord's Supper.*  
*Please partake of the bread as it is passed;*  
*we will share the cup together\*\*,*  
*after sharing our common confession:*

**I believe that Jesus is the Christ, the Son of the living God.**

### THE OFFERING

Invitation to Stewardship Renee Hoke  
Offertory Debbie Watson  
\*Doxology No. 46  
**Praise God, from whom all blessings flow;**  
**Praise Him, all creatures here below;**  
**Praise Him above, ye heavenly host,**  
**Praise Father, Son, and Holy Ghost.**  
\*Prayer of Dedication Renee Hoke

## THE GOING FORTH

\*Invitation to Discipleship Renee Hoke

\*Hymn of Discipleship No. 433  
*Blest Be the Tie that Binds*

\*The Benediction Renee Hoke

\*Response to Benediction Chancel Choir

\*Postlude Debbie Watson

\* If you are able, please stand.

\*\* A few cups of water are in the communion tray for those on sugar-free diets.

## WELCOME TO FIRST CHRISTIAN CHURCH

Welcome! We're glad you are with us for worship today. We want you to feel right at home. For 125 years First Christian Church has been a place where people come seeking a richer relationship with God and neighbor. No matter what your background or previous experience of church, this is a congregation where you can put down roots and experience true community. Our ministry staff and elders leading in worship today will be available after worship to answer your questions. It is our prayer that any person searching for meaningful relationships and a sense of belonging will find it here at First Christian Church of Wichita Falls.

### NURSERY

A quality nursery for infants and young children is available during our worship services. Also available during the week is our childcare programs of Children Come First and Young Ages Preschool.

### "GODLY PLAY"

Children ages 3 years thru 2<sup>nd</sup> grade may participate in "Godly Play" following the Children's Message in the 10:45 worship service. Godly Play allows children to worship and fellowship together in an engaging and age appropriate environment. Children can be picked up immediately following the worship service in Room 213, use Exit door near altar and follow the signs for "Children Pick-Up".

### HEARING AID DEVICES

Are available for those in need by asking an usher in the Sanctuary Narthex.

### SERMONS

Last week's sermon is available in print form in the Narthex of the Chapel and Sanctuary or at [www.firstchristianwf.com](http://www.firstchristianwf.com).

### SPECIAL NEEDS PARKING AREA

The church staff parking lot is available every Sunday morning for members and guests with special needs. Please be mindful of those that need extra room to load and unload wheelchairs and make it easier for them to worship on Sunday mornings!

### COMMON GROUND RECOVERY MINISTRIES

Adult peer support groups each Sunday afternoon at 6:00 pm (Family Challenges, Women's C.A.R.E., Anger Management, Chemical Addictions Recovery & Parent Groups) For more information contact Rev. Erin Taylor, 337-304-3038.

### MID-WEEK COMMUNION SERVICE

We are offering a Wednesday evening period of quiet prayer and communion in our Chapel from 5:00-5:30. Members and visitors are warmly invited to come in and pray for however long or as little as they feel led; from 5:00-5:15, there will be a brief vespers service consisting of scripture, guided prayer and communion.

### PLEASE CALL THE CHURCH OFFICE

### IF A CHURCH MEMBER IS HOSPITALIZED

Due to hospital policy changes & HIPAA laws, if a church member enters any hospital, the church office has no way of knowing and now needs for either the patient, a family member, a friend, or another church member to call and tell us. If in doubt, please, go ahead and call the church office as we would prefer to receive many calls about someone being hospitalized, than us not knowing at all!

### MEMORIALS & HONORS

**IN MEMORY OF LINDA JENSEN** given by Mark & Debbie Turnbow.

**IN MEMORY OF GLENN TOLE** given by Mike & Diane Spiller, Anita Mills, Bill & Melody Jennings, Gordon & Alice West, Mark & Debbie Turnbow, David Wyatt, Mary Beth Wyatt, Craig & Sheila Reynolds.

**IN MEMORY OF BLAIR LANG**, husband of Katie Biggs Lang and son-in-law of Cathy & Jim Biggs, given by Bill & Melody Jennings, Mark & Debbie Turnbow, Craig & Sheila Biggs.

**IN HONOR OF DISCOVERY CLASS** given by Paul & Sharon Stradley.

The flowers this morning are given by Betty Lyons & Children in loving memory of Glen Lyons.



**Sunday Evening Activities Schedule**

- NO Chi Rho & CYF Come As You Are [Grades 6-12] (Room 403)
- 5:14 CGRM Bible Study (Rm 307)
- NO Young Disciples [Grades K-5] (Scout Hall)
- 6:00 Common Ground Recovery Ministries (CGRM) Groups:  
 Parenting (Room 306)  
*Groups NOT meeting today are:*  
 Anger Recovery (Room 304)  
 Chemical Addictions Recovery (Room 305)  
 Women's C.A.R.E. (Room 307)  
 Family Challenges Support (Room 310)

**Ministry News & Calendar Highlights**

**FCC Logo Shirts:** If you ordered an FCC Logo Shirt, you may pick it up in the church office.

**Prime Timers Luncheon** will be today, September 4<sup>th</sup>, at 12:00 noon in the Fellowship Hall.

**Labor Day, September 5<sup>th</sup>:** The Church Building, Offices & All Programs will be CLOSED.

**The Neighborhood Coming September 7!** Midweek ministry at FCC expands this fall with a brand new worship service! Join us in Fellowship Hall every Wednesday for food at 5:30 pm, informal acoustic worship from 6-7 pm, a special play area for small children, and programs for children and teens. It all begins on September 7!

**Mark Your Calendar for Christian Education Sunday September 11!** This Fall First Christian will introduce something new in an effort to grow Sunday School participation for adults. Between October 2 and November 20, we will offer an assortment of 8-week classes especially aimed at those who do not attend Sunday School. This allows adults to make a short-term commitment to Sunday School and experience the benefits. Besides the new classes, our existing adult Sunday School classes will be encouraged to add their class name and topic of study to our Fall Rotation menu. Please turn that information in to Sunday School Superintendent Jeana Brunson on or before September 4. We plan to announce our Fall line-up on September 11 which is Christian Education Sunday. During the Sunday School hour we will enjoy breakfast served by the CMF in the Fellowship Hall and a special preview of all the classes. In worship that Sunday we will honor our Christian educators—those who grow disciples through Sunday School, CMF, CWF, Young Disciples, Chi Rho/CYF and more!

**Journey Through Scripture** begins Sunday, September 11<sup>th</sup>, at 9:45 am, in the Church Parlor led by Larry Spradley. A New Journey: Theme---"Jesus and the Gospels". We will take a closer look at how Jesus is presented through the Four Canonical Gospels (Matthew, Mark, Luke, and John) and the Apocryphal Gospels (those not accepted as part of the New Testament we read today).

**Women's Fall Bible Study: "More to Your Story" by Max Lucado**—Have you ever wondered where you fit in God's plan? In *More to Your Story*, Max Lucado writes, "Above and around us God directs a grand saga, written by his hand, orchestrated by his will, unveiled according to his calendar. When you're part of his master story, your life has purpose, you'll recognize your value, and you'll discover your unique path."

In this 6-session DVD study, we will journey with Max through the New Testament in search of God's narrative. Join Sheri Sutton beginning Wednesday, September 21, at 10:30 am in Room 310. Call the church office at 692-2282 to register. Study guides will be available in September.

**First Christian Church**  
**3701 Taft Blvd, Wichita Falls, Texas 76308**  
**(940) 692-2282, www.firstchristianwf.com**

- Dr. David B. Hartman, Jr., *Senior Minister*
- Rev. Renee Hoke, *Associate Minister*
- Jeanette Showalter, *Director of Music Ministries*
- Justin Dickey, *Director of Youth & Children's Ministries*
- Madi Showalter, *Children's Ministries Intern*
- Rev. Erin Taylor, *Director of Recovery Ministries*
- Heather Dickerson, *Director of Children Come First*
- Karen Bivona, *Director of Young Ages School*
- Cheryl Appling, *Business Administrator*
- Tina Williams, *Financial Secretary*
- Debbie Watson, *Organist*
- Susan Marrs, *Executive Secretary*
- Ann Hunter, *Receptionist*
- Glenda & Preston, *Custodians*

**OPPORTUNITIES**

**Sunday, September 4, 2016**

- PANTRY SUNDAY
- 8:40—Worship ..... Chapel
- 9:30—Sunday School
- 10:45—Worship ..... Sanctuary
- 12:00—Prime Timers Luncheon ..... Fellowship Hall
- 5:14-7:00—Sunday Evening Activities

**Monday, September 5, 2016**

LABOR DAY  
 Church Building, Offices & All Programs Closed

**Tuesday, September 6, 2016**

- 7:30-6:00—Children Come First (T-F)
- 9:00-12:00—Young Ages School (T-F)
- 10:15—FCC Staff Meeting ..... Office
- 11:00—Whirlwind Cluster Ministers' Mtg ..... FCC-Archer City
- 6:00—Elders & Diaconate Dinner ..... Fellowship Hall
- 7:30—Sunday School Teachers Meeting ..... Room 402

**Wednesday, September 7, 2016**

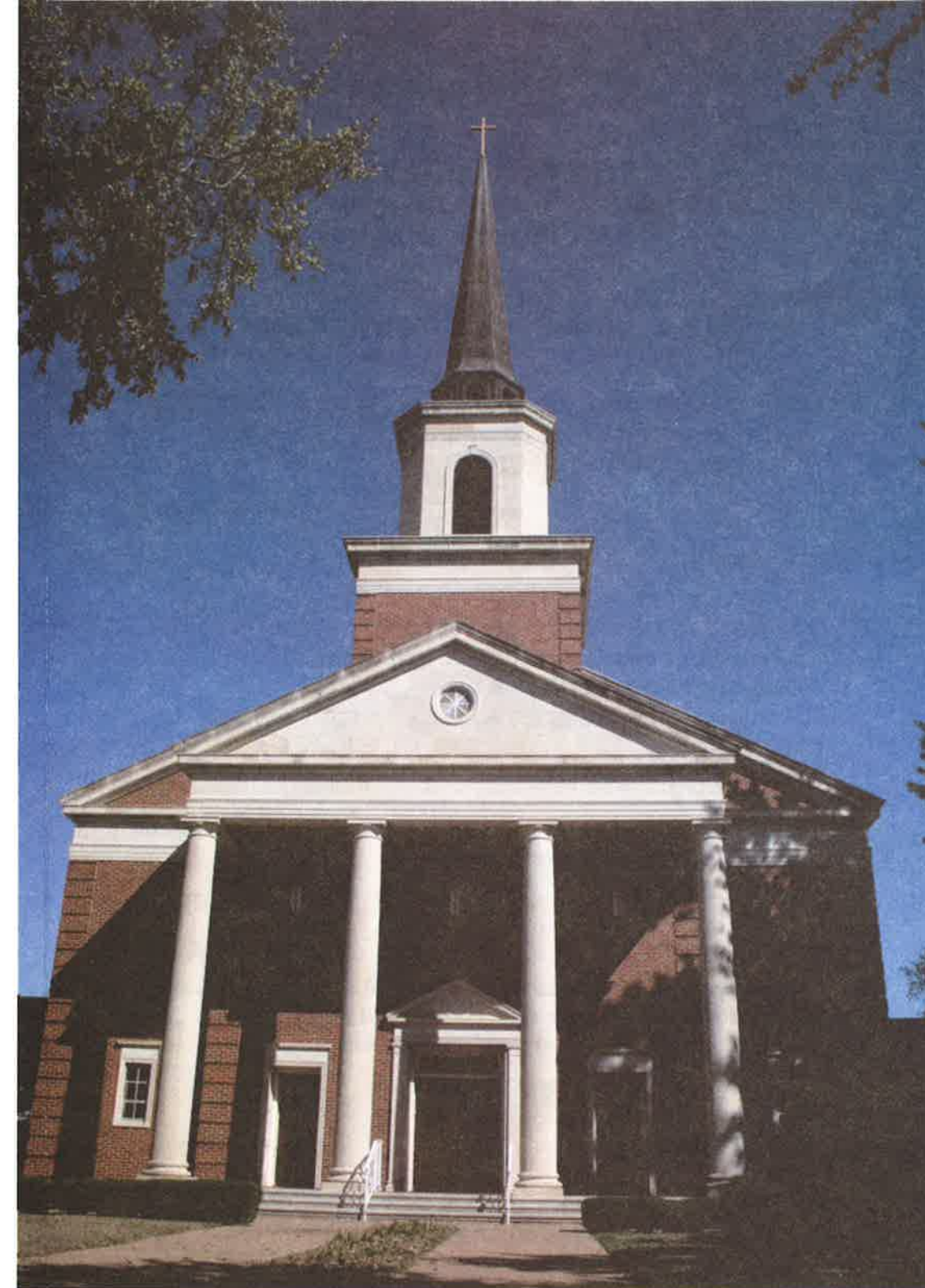
- 7:00—Elders' Breakfast ..... Room 405 & Chapel
- 5:00—Mid-Week Communion Service ..... Chapel
- 5:30—Meal ..... Fellowship Hall
- 6:00-8:00—The Neighborhood ..... Fellowship Hall  
 (Worship, Young Disciples, Chi Rho, CYF, & Meal Outside)
- 7:00—Chancel Choir (High School-Adults) ..... Stratten Hall

**Saturday, September 10, 2016**

3:00-5:00—Chi Rho & CYF (Grades 6-12) at the Food Bank

**Sunday, September 11, 2016**

- CHRISTIAN EDUCATION SUNDAY
- 8:40—Worship ..... Chapel
- 9:30—Sunday School Kickoff Breakfast ..... Fellowship Hall
- 9:45—Journey Through Scripture ..... Parlor
- 10:45—Worship ..... Sanctuary
- 3:45-7:00—Sunday Evening Activities



**FIRST CHRISTIAN CHURCH**

(DISCIPLES OF CHRIST)

Wichita Falls, Texas